



INSTALLATION INSTRUCTIONS FOR:

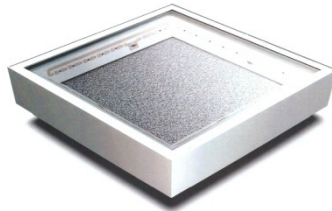
Sealed Low Bay Series Trunion Mount

Revision 1



CAUTION:

1. TURN OFF ALL POWER TO POLE BEFORE SERVICING
2. ONLY QUALIFIED PERSONNEL SHOULD PERFORM INSTALLATION OR SERVICING OF FIXTURES



1. Assemble the trunion mount by connecting the two (2) trunion legs to the ceiling mount bracket. Attach the ends with the adjustable slots to the ceiling mount using four (4) machine screws.



2. Attach the completed trunion to the ceiling using mounting hardware per your application.
3. Attach trunion hanger brackets to the back plate using four (4) bolts, four (4) nuts and four (4) washers. Tighten all fasteners.
4. Attach back plate/hanger bracket assembly to trunion legs using four (4) bolts.
5. Using watertight electrical conduit and watertight cord grips, run the wires from the junction box through the conduit and through the hole in the back plate. Tighten all connections.
6. Hang the light fixture from the bak plate by hooking the light over the hooks on the back plate. Attach the security tether from the light to the back plate and install and tighten the wing nut onto the stud.



THIS LED FIXTURE IS A HIGHLY ADVANCED, ENERGY EFFICIENT PRODUCT THAT WILL PROVIDE THE END USER WITH YEARS OF DEPENDABLE SERVICE. IT WILL DO SO ONLY IF INSTALLED PROPERLY IN ACCORDANCE WITH THE NATIONAL ELECTRIC CODE AND OR LOCAL CODE SPECIFICATIONS. FAILURE TO ADHERE TO THESE CODES AND RESTRICTIONS MAY RESULT IN SERIOUS INJURY, DAMAGE TO ADJACENT EQUIPMENT, FIXTURE AND OR POWER SUPPLY AND WILL VOID THE WARRANTY. THE INSTALLATION INSTRUCTIONS DO NOT SUPPORT ALL DETAILS OR VARIATIONS IN EQUIPMENT, NOR DO THEY PROVIDE FOR ALL POSSIBLE CONTINGENCIES RELATED TO THE INSTALLATION, SERVICE OR MOUNTING SITUATION. SHOULD SPECIFIC PROBLEMS OCCUR THAT ARE NOT COVERED BY THE ATTACHED INSTALLATION INSTRUCTIONS, PLEASE CONTACT YOUR SALES REPRESENTATIVE OR DISTRIBUTOR FOR ASSISTANCE. RETAIN THESE INSTALLATION INSTRUCTIONS FOR FUTURE USE. DO NOT MODIFY THIS LIGHTING DEVICE FOR ANY REASON. THESE DEVICES HAVE BEEN DESIGNED FOR MAXIMUM PERFORMANCE AND EASE OF INSTALLATION. ANY MODIFICATIONS WILL VOID THE WARRANTY.



INSTALLATION INSTRUCTIONS FOR:

Sealed Low Bay Series Trunion Mount

Revision 1



CAUTION:

1. TURN OFF ALL POWER TO POLE BEFORE SERVICING
2. ONLY QUALIFIED PERSONNEL SHOULD PERFORM INSTALLATION OR SERVICING OF FIXTURES

7. Attach the power supply and ground wiring by attaching the Neutral (white) to the white; Line (black) to black; and Ground (green) to green using wire nuts (not furnished).
8. Pivot the light fixture into final mounting position and push the light fixture tightly against back plate to line up fastener holes. Attach the light fixture to the mounted back plate by installing the supplied mounting screws through the attachment holes located on three (3) sides of the light fixture. Torque machine screws to 23 in./lbs.
9. Once installation is completed, remove plastic protective sheet from the outer lens.



THIS LED FIXTURE IS A HIGHLY ADVANCED, ENERGY EFFICIENT PRODUCT THAT WILL PROVIDE THE END USER WITH YEARS OF DEPENDABLE SERVICE. IT WILL DO SO ONLY IF INSTALLED PROPERLY IN ACCORDANCE WITH THE NATIONAL ELECTRIC CODE AND OR LOCAL CODE SPECIFICATIONS. FAILURE TO ADHERE TO THESE CODES AND RESTRICTIONS MAY RESULT IN SERIOUS INJURY, DAMAGE TO ADJACENT EQUIPMENT, FIXTURE AND OR POWER SUPPLY AND WILL VOID THE WARRANTY. THE INSTALLATION INSTRUCTIONS DO NOT SUPPORT ALL DETAILS OR VARIATIONS IN EQUIPMENT, NOR DO THEY PROVIDE FOR ALL POSSIBLE CONTINGENCIES RELATED TO THE INSTALLATION, SERVICE OR MOUNTING SITUATION. SHOULD SPECIFIC PROBLEMS OCCUR THAT ARE NOT COVERED BY THE ATTACHED INSTALLATION INSTRUCTIONS, PLEASE CONTACT YOUR SALES REPRESENTATIVE OR DISTRIBUTOR FOR ASSISTANCE. RETAIN THESE INSTALLATION INSTRUCTIONS FOR FUTURE USE. DO NOT MODIFY THIS LIGHTING DEVICE FOR ANY REASON. THESE DEVICES HAVE BEEN DESIGNED FOR MAXIMUM PERFORMANCE AND EASE OF INSTALLATION, ANY MODIFICATIONS WILL VOID THE WARRANTY.